

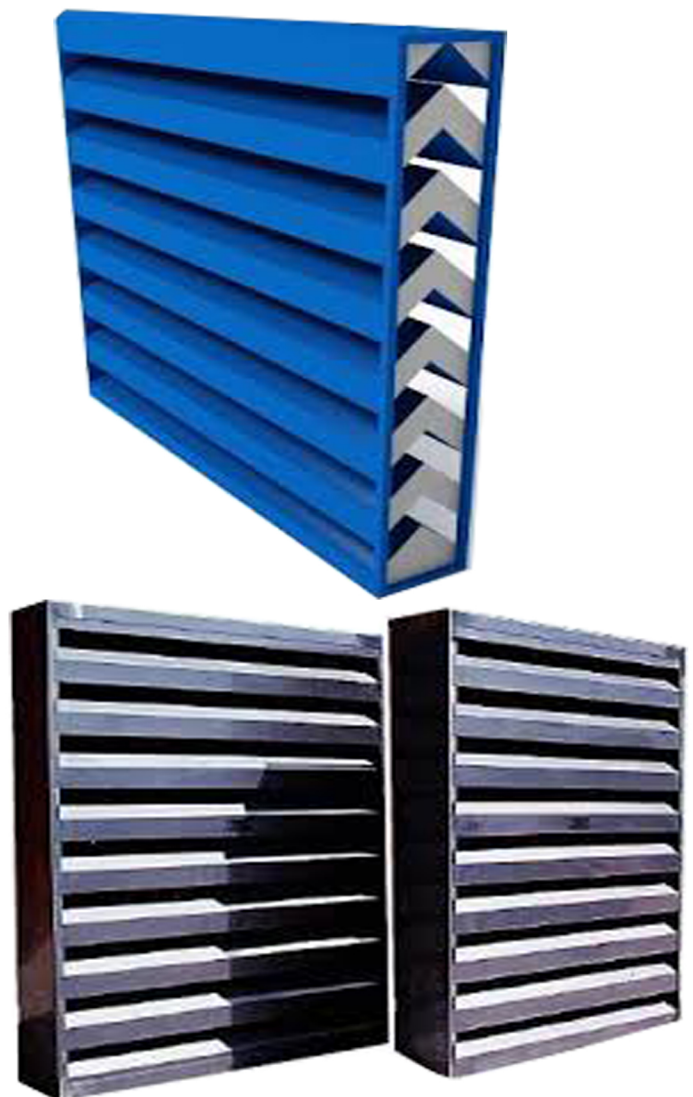
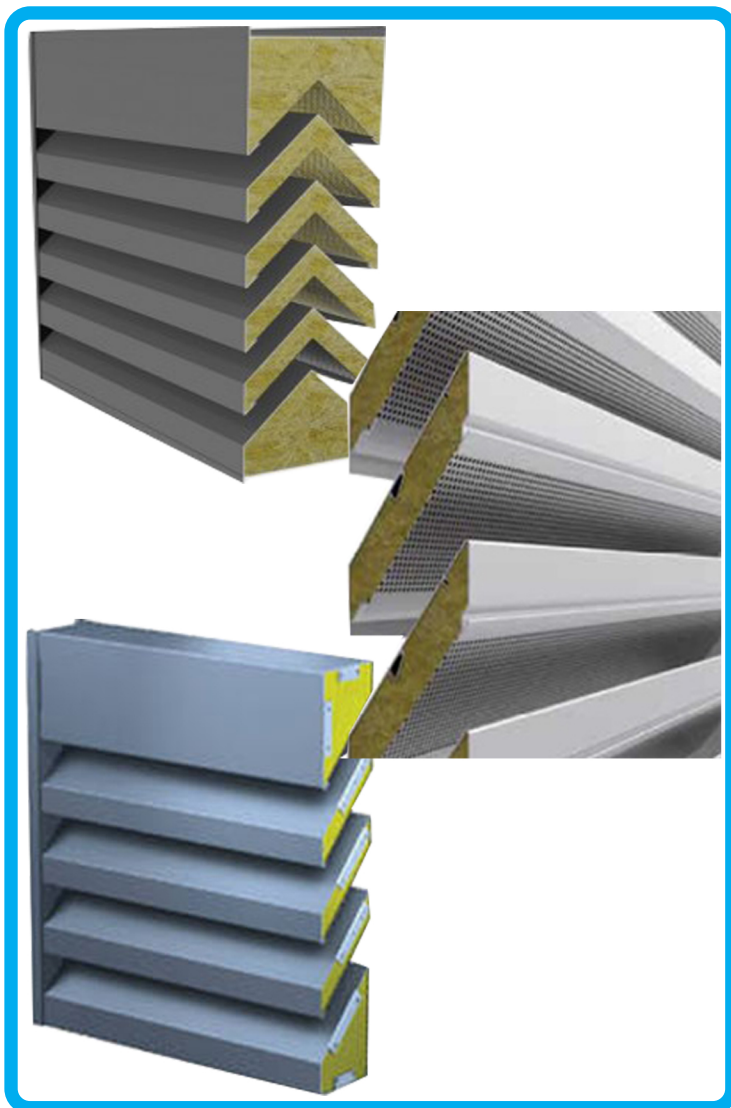
ACOUSTIC LOUVER

MANUFACTURER OF AIR OUTLETS :

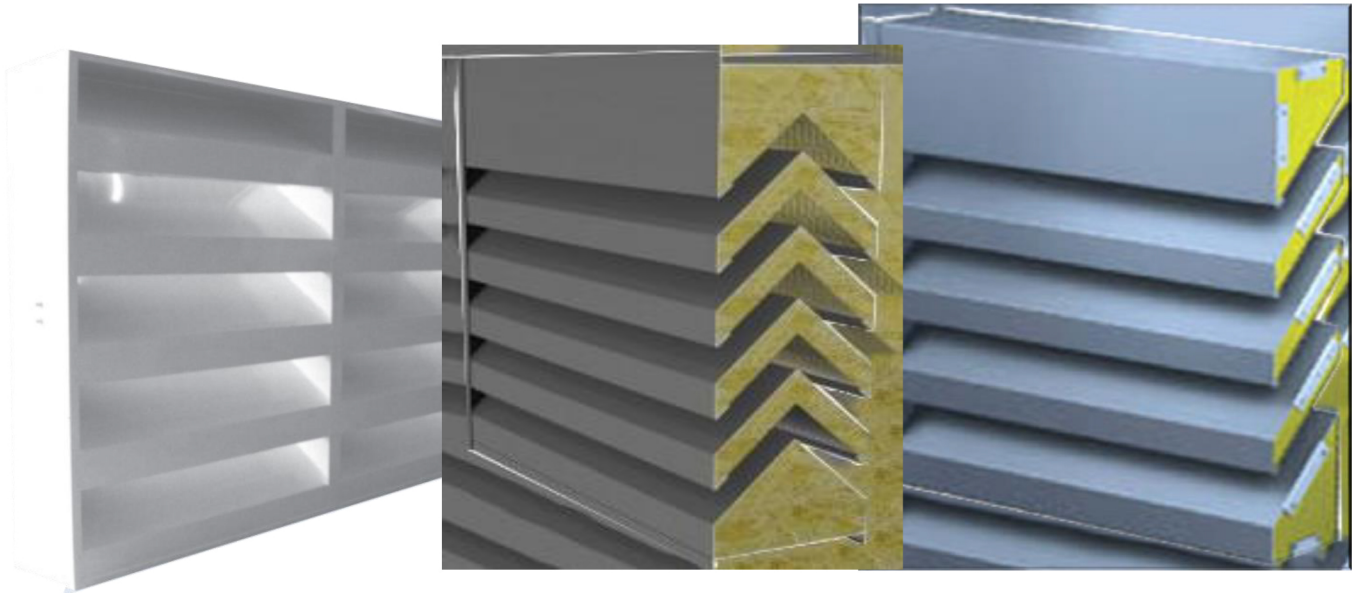
Grills, Diffusers, Control Volume Damper (VCD), Non Return Damper (NRD), Fire Rated Air Ducting and Louvers Systems.

FABRICATION OF GI DUCTS, PI DUCTS, FLEXIBLE DUCTS & EXHAUST AND FRESH AIR LOUVERS

SALE OF FIRE DAMPERS, MOTORIZED SMOKE FIRE DAMPER (MSFD)



ACOUSTIC LOUVER



Acoustic Louvers are economical, effective and attractive. They are designed for maximum sound reduction when space is limited. They are aesthetically pleasing and available in various material types intended to be used where space is limited.

Acoustic Louvers are used as part of the intake/exhaust air system of buildings, structures, or equipment to help reduce noise produced by the system equipment. They have a relatively large surface area which compensates for their lack of depth. Models are available in varying depths, percent open area and blade configurations yielding various pressure loss and noise reduction performance.

ACOUSTIC LOUVER

AIRPRO Systems' AAL (standard blade), **AAL-S** (sight-proof) and **AAL-F** (airfoil shaped) Acoustic Louvers are designed to provide optimal acoustic performance (Transmission Loss; dB) with minimal airflow restrictions for a variety of space restricted applications. Acoustic louvers are manufactured with a choice of finishes and material options. If required by the system or in-field conditions, the acoustic louver may be assembled in a modular fashion. AIRPRO Systems offers a range of blade geometries that will meet your acoustic, aerodynamic and security requirements.



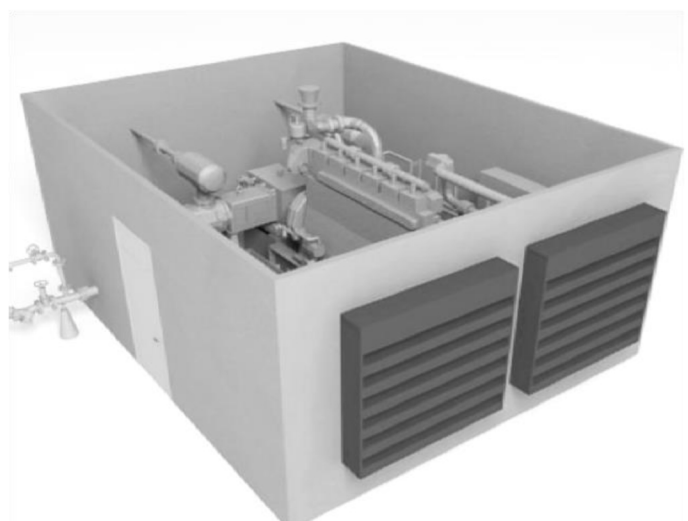
AIRPO STANDARD BLADE ACOUSTIC LOUVER (AAL)



AIRPO SIGHT PROOF, V - BLADE ACOUSTIC LOUVER (AAL-S)



AIRPO AIRFOIL BLADE (AAL-F)



AIRPO AIR INTAKE ACOUSTIC LOUVERS
FOR A MECHANICAL EQUIPMENT ROOM

ACOUSTIC LOUVER

Applications

- Plant and mechanical room ventilation
- Replace standard rain louvers for improved acoustic performance
- Relief air from factories and workshops
- Ventilation for acoustic enclosures
- Air conditioning and cooling tower barriers (with airflow)
- Power generation equipment
- Noise barrier ventilation systems

Accessories

- 1x1 wire mesh protection
- Access Doors

Standard Features

- Casing materials: 18 ga. Galvanized
- Depth range: 4 – 12 in. (other sizes available)
- Cross-section (max. piece size): 48 in. wide by 120 in. tall
- Acoustic grade fiberglass media fill

Construction Options

- Heavy casings: 10 and 14 ga.
- Casing materials: stainless steel, satin coat, and aluminum constructions
- Mounting flange
- Wire mesh protection
- Fiberglass cloth media protection
- Custom configurations for space and weight restrictions
- Paint finish and corrosion protection
- Hinged or door mountings